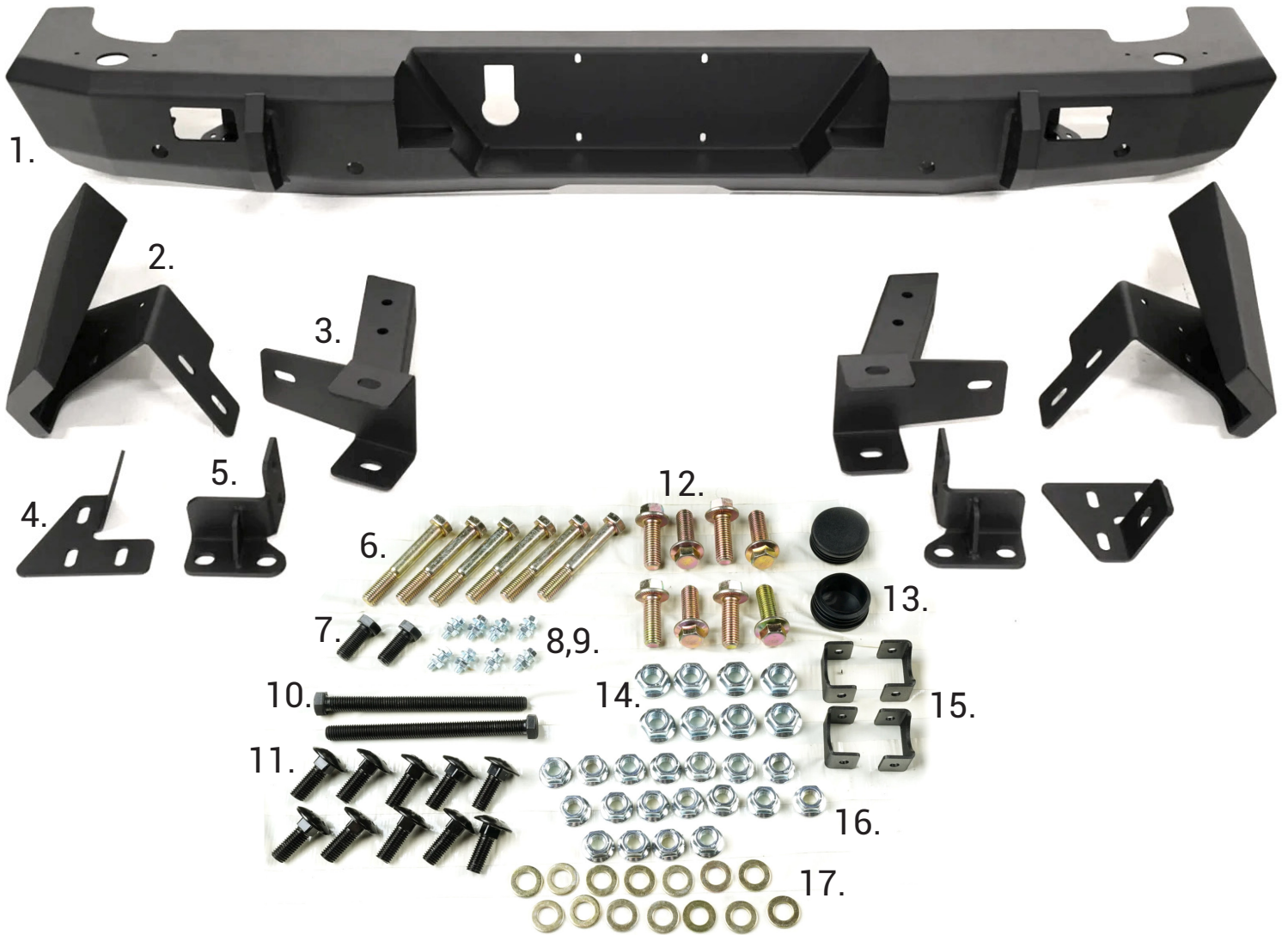


11540.38

## Components and Hardware:



## Components and Hardware:

1. Rear Bumper.....	(1)	10. M12 x 1.75mm 150mm, Hex Head Bolt .....	(2)
2. Bed Side Protection (Pass. & Dr.).....	(2)	11. M12 x 1.75mm 35mm, Carriage Bolt .....	(10)
3. Frame Mount Bed Protection (Pass. & Dr.).....	(2)	12. M14 x 2.00mm 40mm, Flange Hex Head Bolt .....	(8)
4. Brace Bed Protection (Pass. & Dr.).....	(2)	13. Plastic Cap (covers spindle hole).....	(2)
5. Frame Mount (Pass. & Dr.) .....	(2)	14. M14 x 2.00mm, Serrated Flange Nut .....	(8)
6. M12 x 1.75mm 85mm, Hex Head Bolt .....	(6)	15. Back-up Sensor Mount Brace .....	(4)
7. M10 x 1.50mm 30mm, Hex Head Bolt .....	(2)	16. M12 X 1.75mm, Serrated Flange Nut.....	(18)
8. M6 x 1.00mm 16mm, Flange Hex Head Bolt .....	(8)	17. M12 Flat Washer .....	(14)
9. M6 x 1.00mm, Serrated Flange Nut .....	(8)	18. Rubber Plug (not shown).....	(4)

# WingMate, Rear Bumper, Jeep JT

**STEP 1:**

Disconnect lights, sensors, and any harness attached to the bumper. Take off the rear bumper and any additional rear bed protection.

Retrieve the spare tire from its storage location beneath the truck.

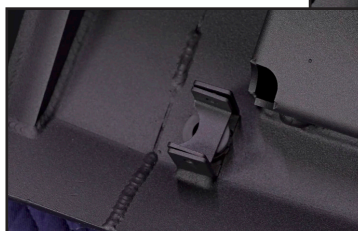

**STEP 2:**

Within the bumper, locate the designated space for your backup sensors. If your JT originally came with this feature, detach the sensors from your OE bumper. Insert the sensor into the bumper, ensuring it aligns with the keyway; rotate the sensor to secure it in place.

If your JT did not come with this feature, substitute the sensor with the provided rubber plug (18).


**STEP 3:**

Once the sensor or plug is in place, affix the Back-up Sensor Mount Brace (15) onto the back of the sensor/plug. Utilize the M6 bolt and nut (8,9) to secure the brace to the tabs on the bumper. Ensure the brace aligns with the sensor/plug snugly, and thoroughly tighten the hardware.



# WingMate, Rear Bumper, Jeep JT

**STEP 4:**

Detach the Trailer Wiring connector from your OE bumper by squeezing the tabs on the back to release it.

Install the connector onto the new bumper by pressing it through the front. Adjust the tabs if needed to ensure a secure click onto the thicker bumper material. Employ a flat-head screwdriver to carefully pry and bend the tabs over the thicker material for a secure fit.



**STEP 5:**

Place the frame mount (5) onto the top of the frame rail of the JT, ensuring that the shape of the mount matches the contour of the frame rail face.

Once the mount is in position, insert the M14 flange bolt (12) and serrated flange nut (14) through the top of the frame rail. Thoroughly tighten the mount to the frame for a secure attachment.



**STEP 6:**

Moving on to bumper installation, it's recommended to cover the lower corner of the bed with painter's tape to provide additional protection against scratching the paint while positioning the bumper. We strongly advise seeking assistance when lifting the bumper onto the JT, as it is heavy and should not be attempted alone.



# WingMate, Rear Bumper, Jeep JT

**STEP 7:**

With one person holding the bumper in place, the other can start installing the hardware to secure it. Use the M14 flange bolt (12) and serrated flange nut (14) through the frame rail face and the additional bracket installed in step 5. Install all four bolts and nuts. At this point, refrain from fully tightening; hand-tighten only to hold the bumper in place. Adjustment will be performed before fully tightening this hardware.



**STEP 8:**

Carefully route all wiring for the trail connector and backup sensors, ensuring that the wires do not get pinched or unnecessarily pulled, which could lead to failure. Secure the wires with zip ties to prevent any movement. Subsequently, plug and connect the sensors and trailer connector, ensuring a secure and reliable connection.



**STEP 9:**

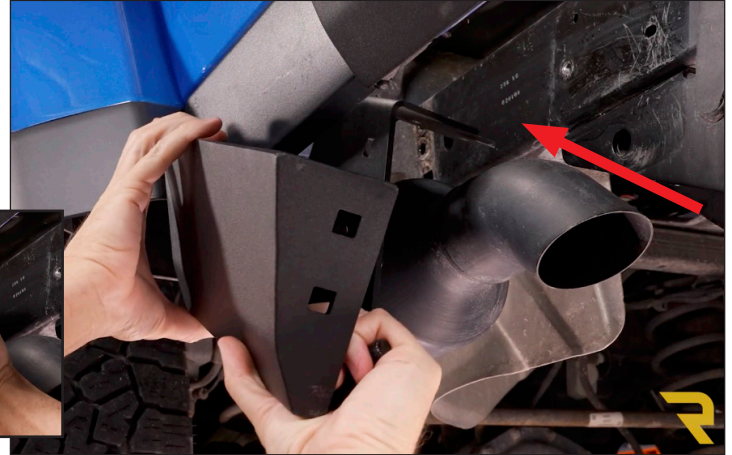
Now that the bumper is in position on the truck, the next step is to install the bed side protection. Before positioning the bed side protection, temporarily install two of the three M12 carriage bolts (11). These two bolts need to be preinstalled because once on the vehicle, there isn't enough space between the bed and this piece for installation. Secure them with M12 Serrated Flange Nut (16), only finger tight at this time.



## WingMate, Rear Bumper, Jeep JT

### STEP 10:

The driver's side, due to the exhaust, is the most challenging. Take the bed side protection and rotate it so that the top mounting portion is above the exhaust. While positioning it, rotate the mounting face to the bumper down and insert two M12 carriage bolts (11). Rotate it into position and secure the two carriage bolts with M12 Serrated Flange Nuts (16) inside the bumper. Hand-tighten at this time to hold the item in position.



### STEP 11:

The frame mount for the bed side protection has a driver and passenger side. The square tube of the frame mount should point towards the back of the bed. On the face of the frame mount, there is a slot for a bolt to attach to the frame. This slot is not centered; it's closer to the bottom.

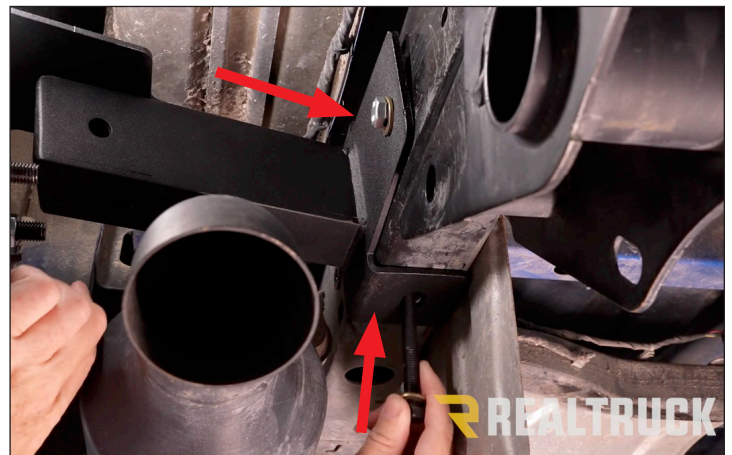
Now, position the U-shape of the frame mount over the JT frame and align the slot mentioned above with the hole in the frame.



### STEP 12:

Attach the frame mount to the frame using two bolts.

Hand-tighten both the short M10 bolt (7) on the face of the frame mount and the long M10 bolt (10). The long M10 bolt should go through the bottom of the mount, through the frame, and thread an M10 serrated flange nut (16) at the top of the frame. Leave the item loose for adjustment.



## WingMate, Rear Bumper, Jeep JT

**STEP 13:**

Remove the serrated flange nuts from the carriage bolts on the side protection from step 9. Add the M12 carriage bolt at the top. Now, position the side protection brace (4) over the three carriage bolts. Hand-tighten three M12 serrated flange nuts (16)


**STEP 14:**

Take two M12 bolts (6) and drop them through the top wing of the side protection, into the square tube of the frame mount. Secure them using M12 serrated flange nuts (16) at the bottom. Hand-tighten and leave them loose for adjustment.


**STEP 15:**

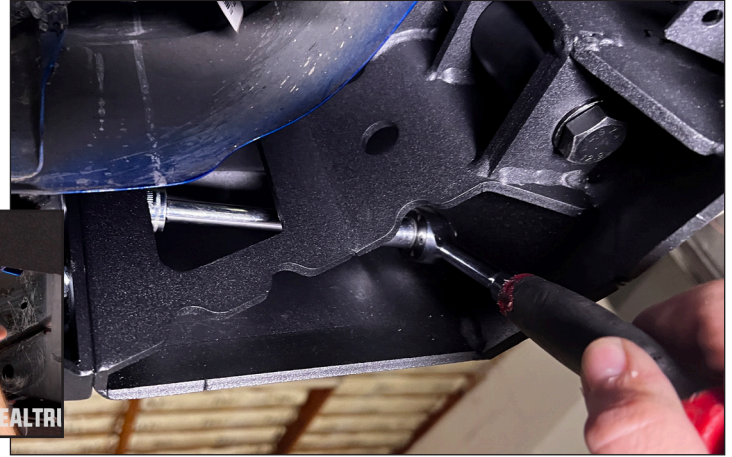
Insert an M12 bolt (6) through the back of the square tube of the frame mount, passing through the side protection brace. Hand-tighten an M12 serrated flange nut (16) to secure it.



## WingMate, Rear Bumper, Jeep JT

### STEP 16:

Adjust the side protection to match the contours of the bumper. Ensure that the exterior shape align, then fully tighten the two carriage bolts connecting the side protection to the bumper. To tighten these bolts, use a socket and different extension to provide enough space for the ratchet to rotate.



### STEP 17:

Proceed to adjust the bumper side to side and up/down. Ensure the bumper is centered by comparing the tightness of the side protection to the truck bed. Once the bumper is centered and level, fully tighten the M14 bolts at the frame rail face.



### STEP 18:

Adjust the frame mount to side protection to ensure that the hardware is not binding. Then, fully tighten the frame mount to the frame.



## WingMate, Rear Bumper, Jeep JT

**STEP 19:**

Thoroughly tighten the three carriage bolts in the side protection.



**STEP 20:**

Now, thoroughly tighten the three bolts in the square tube of the frame mount.



**STEP 21:**

Congratulations! Bumper installation is now complete once all points are fully tightened. If you're not installing the swingouts at this time, cover the spindle holes with the provided plastic caps (13). If you are installing swingouts, please refer to the swingout instruction sheet for further guidance.

