



WEATHERBEATER[®] FLOOR LINERS

PT #9530

CARE AND USE INSTRUCTIONS

Thank you for selecting an WeatherBeater™ Floor Liners from Husky Liners Inc. Your new liners are custom molded to fit your specific vehicle's floor board. The liners are made to take the place of your factory floor mats. For correct fit, it is necessary to remove the factory floor mats before installing your new floor liners. However, do not remove the factory-installed carpeting.

Your liners are made from an engineering resin that is lightweight and extremely tough and durable. The easiest way to clean your liner is with a damp cloth or sponge and soap and water. Windex[®], 409[®] and ArmorAll[®] type cleaners work as well.

INSTALLATION INSTRUCTIONS FOR YOUR FRONT FLOOR LINERS



LEFT OR DRIVER'S SIDE



RIGHT OR PASSENGER'S SIDE

TO EASE INSTALLATION OF YOUR NEW FRONT LINERS, MOVE BOTH FRONT ROW SEATS TO THEIR MOST REARWARD POSITION. WITH THIS DONE, INSTALL THE LINERS AS SHOWN ABOVE. THE DRIVER AND PASSENGER SIDE LINER WILL ATTACH TO THE FACTORY FLOOR MAT RETAINING POSTS LOCATED IN THE FACTORY CARPETING. ONCE YOU HAVE INSTALLED YOUR LINERS, REPOSITION THE SEATS AS DESIRED.



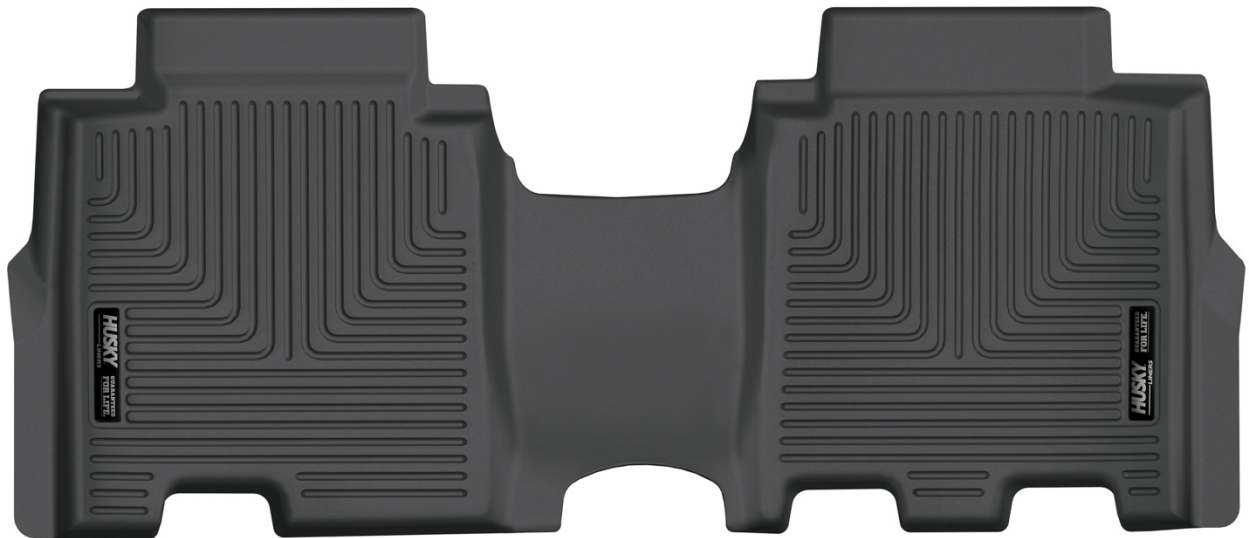
WEATHERBEATER[®] FLOOR LINERS

PT #9530

Thank you for selecting an WeatherBeater™ Floor Liners from Husky Liners Inc. Your new liners are custom molded to fit your specific vehicle's floor board. The liners are made to take the place of your factory floor mats. For correct fit, it is necessary to remove the factory floor mats before installing your new floor liners. However, do not remove the factory-installed carpeting.

Your liners are made from an engineering resin that is lightweight and extremely tough and durable. The easiest way to clean your liner is with a damp cloth or sponge and soap and water. Windex®, 409® and ArmorAll® type cleaners work as well.

INSTALLATION INSTRUCTIONS FOR YOUR SECOND SEAT FLOOR LINERS



TO EASE INSTALLATION OF YOUR NEW SECOND SEAT LINERS, MOVE BOTH FRONT ROW SEATS TO THEIR MOST FORWARD POSITION. WITH THIS DONE, INSTALL THE LINERS AS SHOWN ABOVE. ONCE YOU HAVE INSTALLED YOUR LINERS, REPOSITION THE SEATS AS DESIRED.