

# INSTALLATION INSTRUCTIONS CTIONS


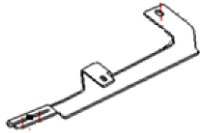

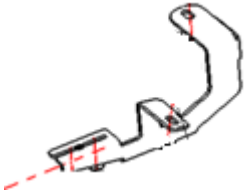
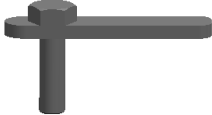





PART# PW00368814

## OE STYLE RUNNING BOARD FOR KIA KX5

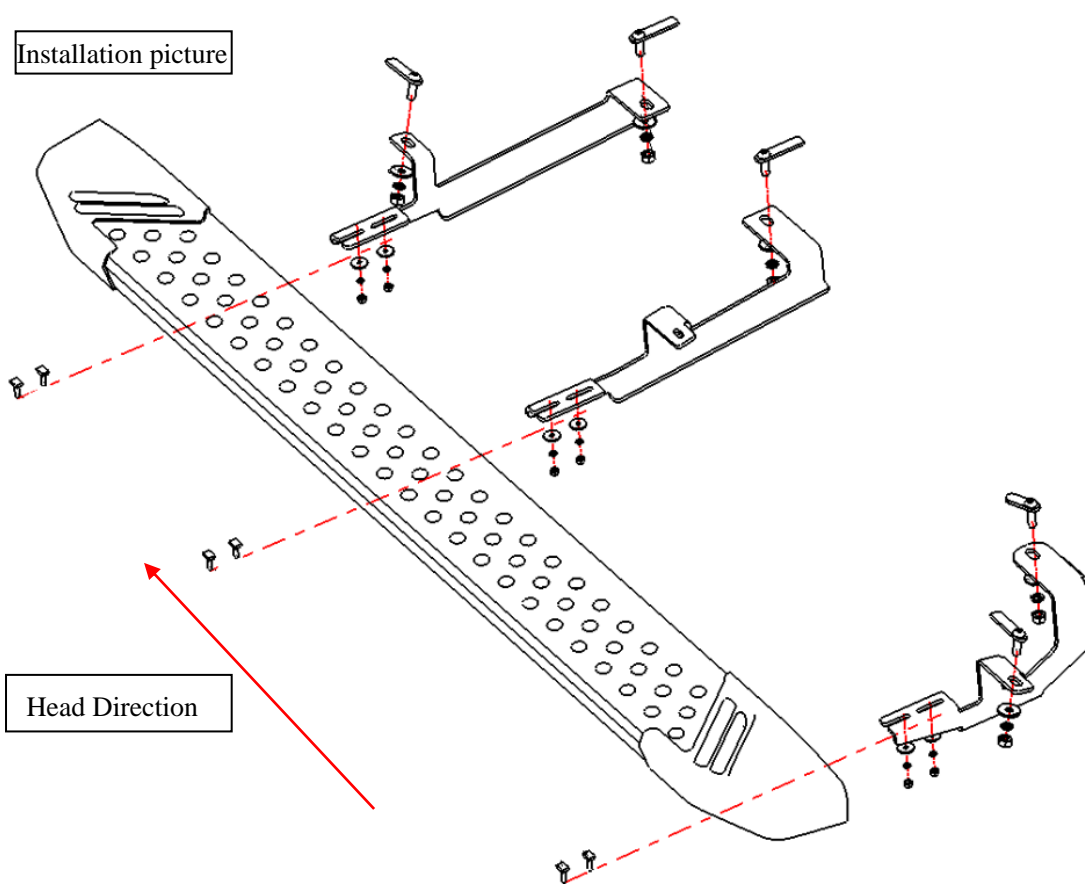
### NOTICE:

- ≡ Please read the installation instructions completely before installation to avoid scratching or damaging your vehicle.
- ≡ The figures provided are for reference only and may have minor differences with the actual product received. Despite this, they will both share the same assembly method.

### PARTS LIST:

NO.	QTY	PICTURES	NO.	QTY	PICTURES
①	2	 Running board (Left and Right)	②	2	 Middle brackets (Left and Right)
③	2	 Front brackets (Left and Right)	④	8	 Rear brackets (Left and Right)
⑤	6	 Large T-bolt	⑥	6	 Large Hex nuts
⑦	10	 Large washers D10	⑧	2	 Small T-bolt
⑨	2	 Small Hex nuts	⑩	2	 Smaller Large washers

# INSTALLATION INSTRUCTIONS CTIONS



## ASSEMBLY PROCEDURE:

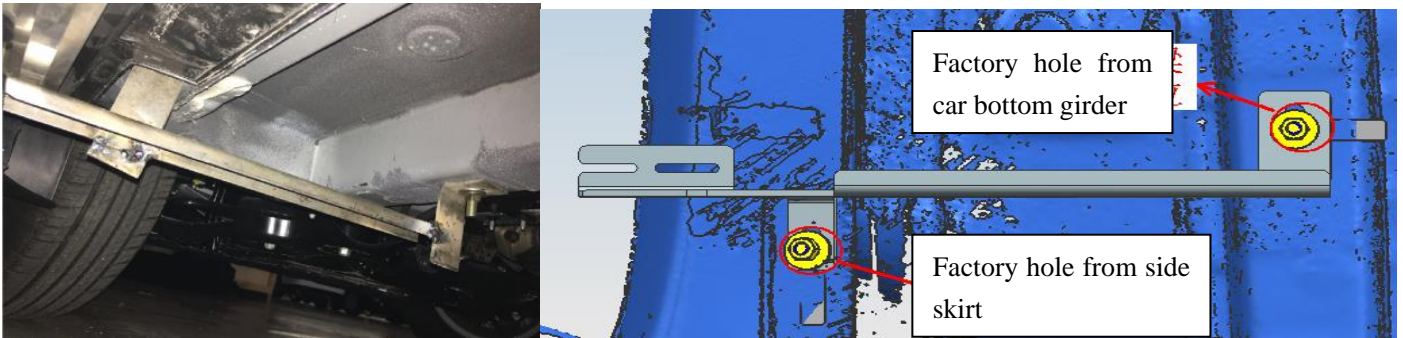
Step 1: Shut down the engine and check around the vehicle for keeping safe environment for installation.

Step 2: Remove contents from box, verify all parts are present

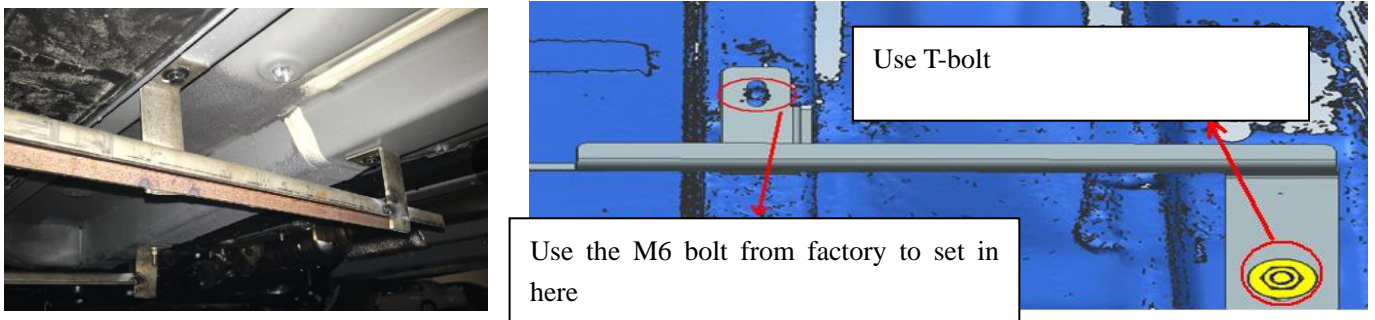
Step 3: Remove the plastic plug from vehicle bottom and then place the T-bolt as bellow photo shown to connect the front mounting guard (L). Finished then fasten lightly with nuts.



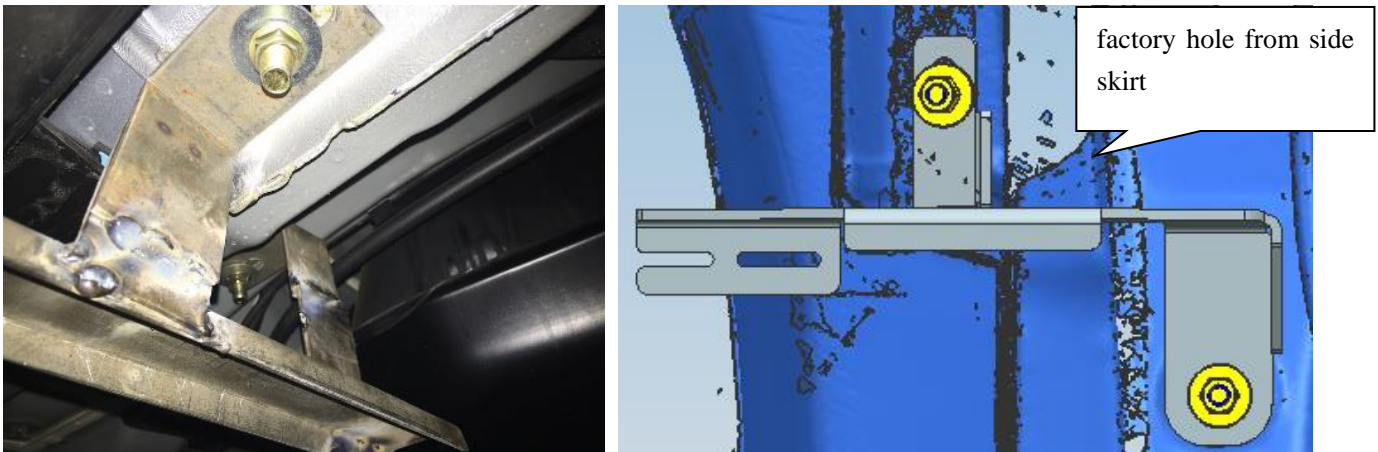
# INSTALLATION INSTRUCTIONS CTIONS



Step 4: Remove the plastic plug from vehicle bottom and then place the T-bolt to factory hole from car bottom girder as bellow photo shown to connect the center mounting guard (L). Finished then fasten lightly with nuts.



Step 5: Remove the plastic plug from vehicle bottom and then place the T-bolt to factory hole as bellow photo shown to connect the rear mounting guard (L). Finished then fasten lightly with nuts.

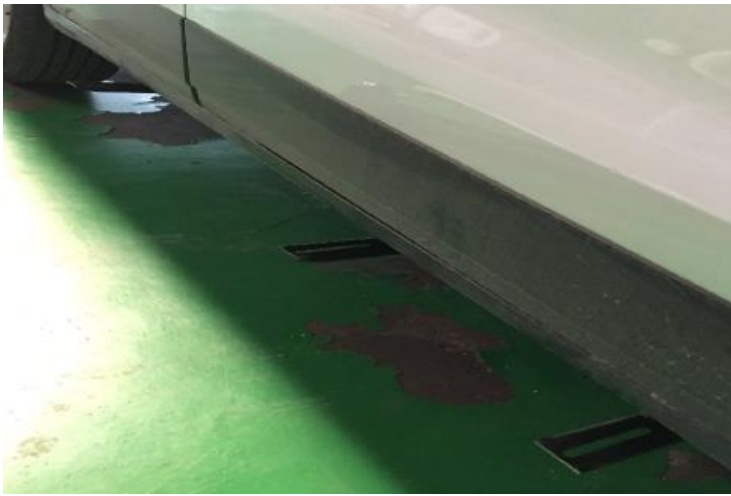


## INSTALLATION INSTRUCTIONS CTIONS

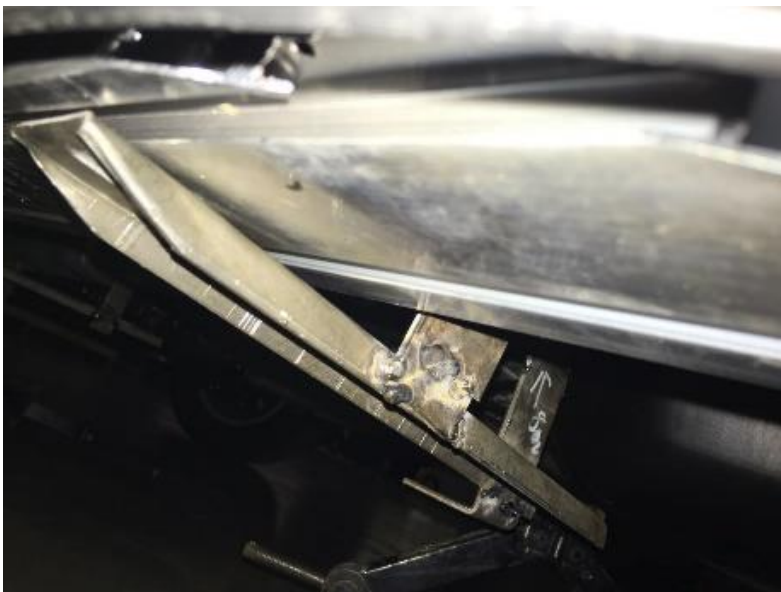
Step 6: The distances from the front tie to those brackets are: 36cm, 87cm, 167cm



Step 7: Install the main part of the product; place the running board body onto the installed brackets.



Step 8: Fasten the body with relevant screws and bolts.

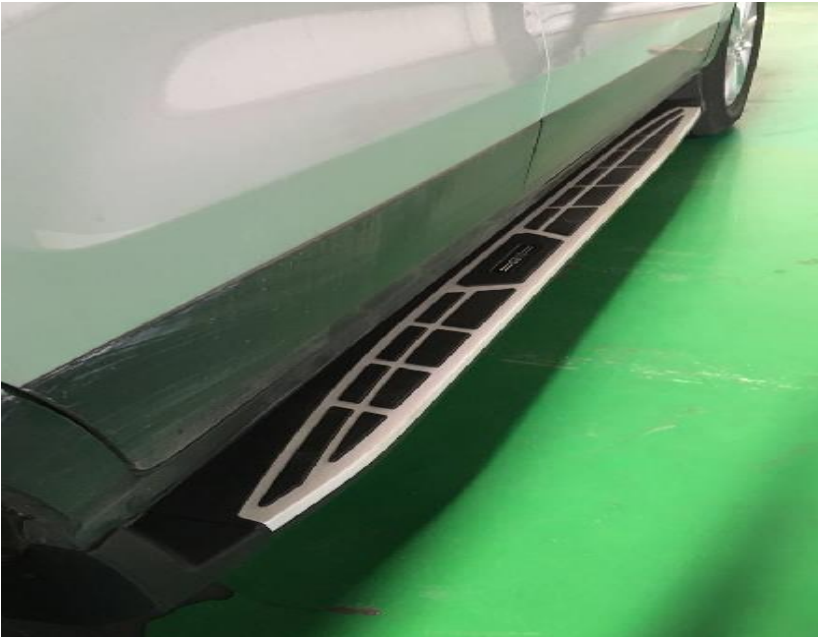


## INSTALLATION INSTRUCTIONS CTIONS

Last step: install the cap end on both sides by using the Self Tapping Bolts and screws.



Finish the installation.



**DISCLAIMER:** We are not responsible for any quality problems caused by improper installation and use.