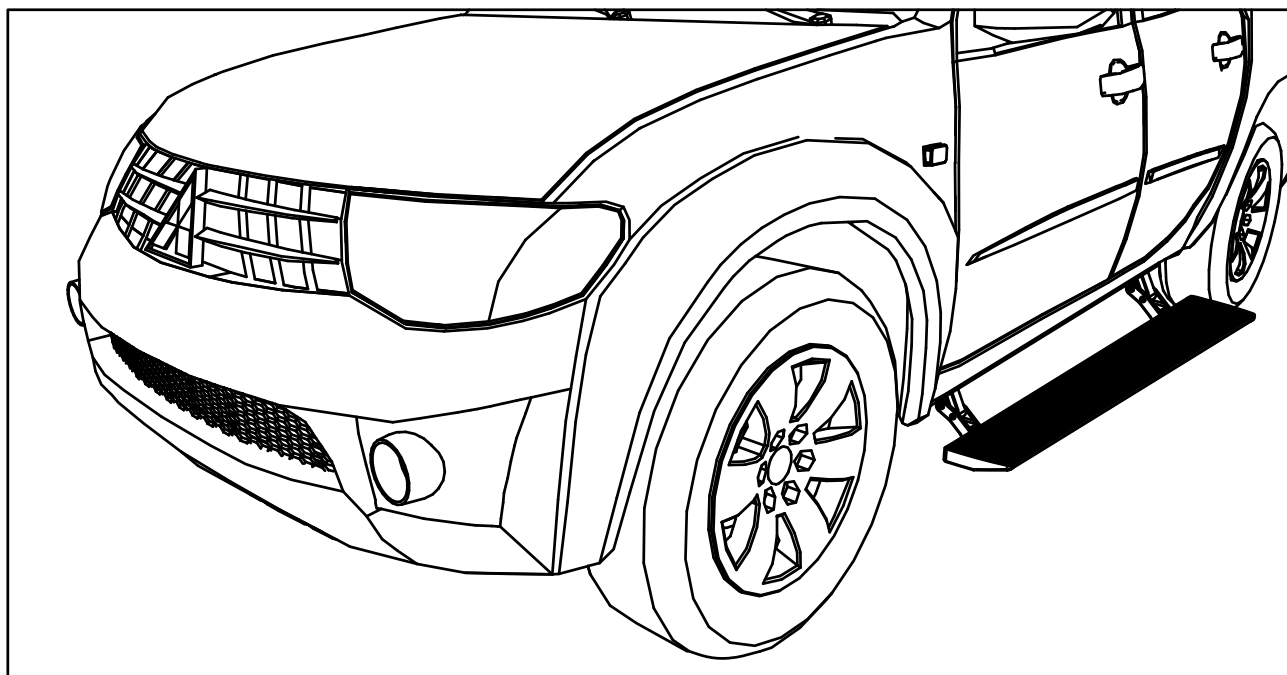
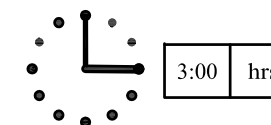


MITSU TRITON POWER BOARD

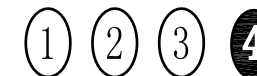


MITSU TRITON

INSTALLATION TIME



SKILL LEVEL



4=Experienced

APPLICATION: MITSU TRITON 2014

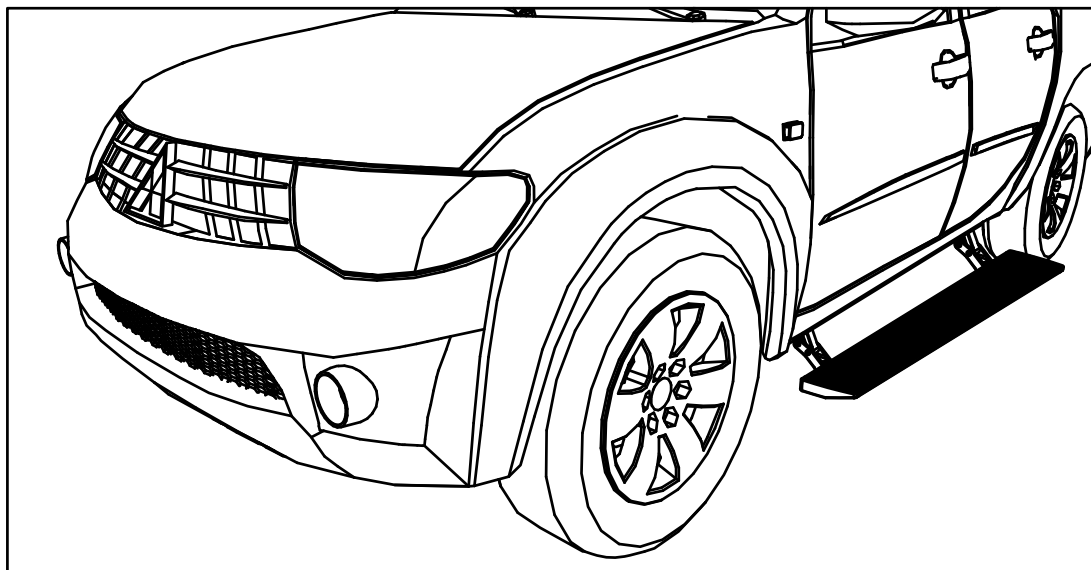


PART: PST05-1610

TOOLS REQUIRED:

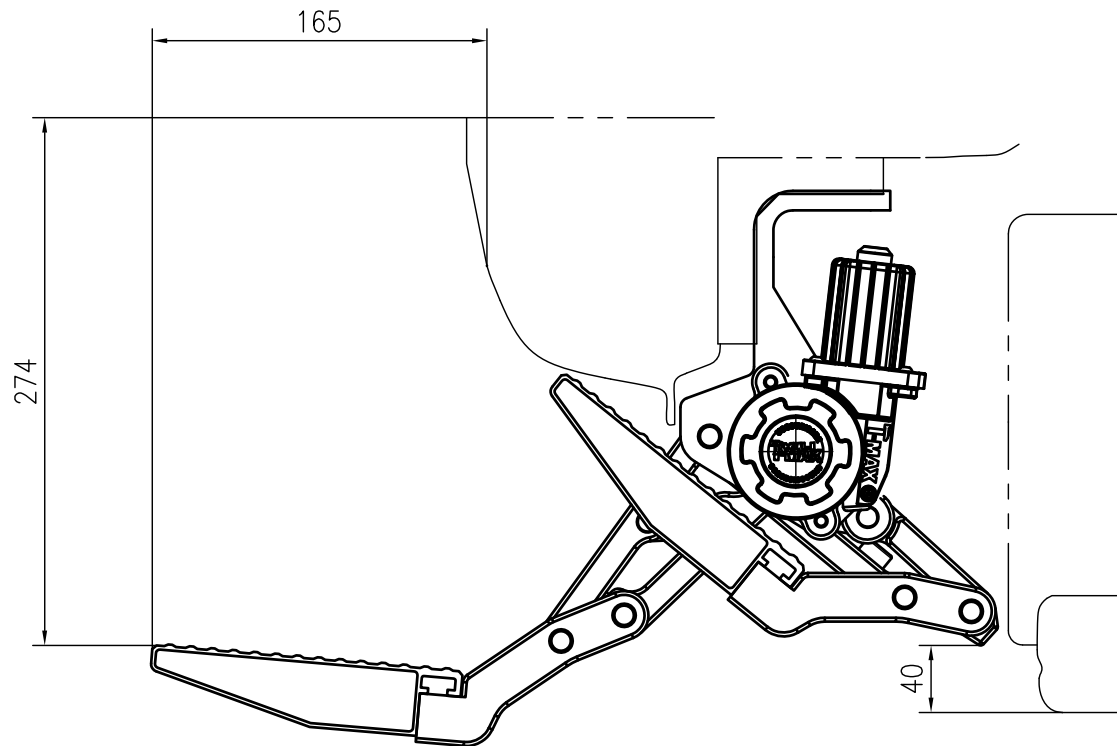
- ① 5 mm hex key wrench (allen wrench)
- ② 13mm socket
- ③ Pry
- ④ Wire stripper/cutter
- ⑤ Vinyl tape
- ⑥ Screwdriver

Contents



Product Technical Specification.....	02
Product Packing List	03
Mechanical Installation.....	06
Electrical Installation.....	11
Maintenance.....	17
Warranty Card	18

Product Technical Specifications



Rated voltage: 12V

Rated load: $\leq 300\text{kg}$

Length: 1.86m

Gross weight: 24kg

Forward extension size: 165mm

(Horizontal distance between the edge of power board and the vehicle door when the board extends)

Step falling dimension: 274mm

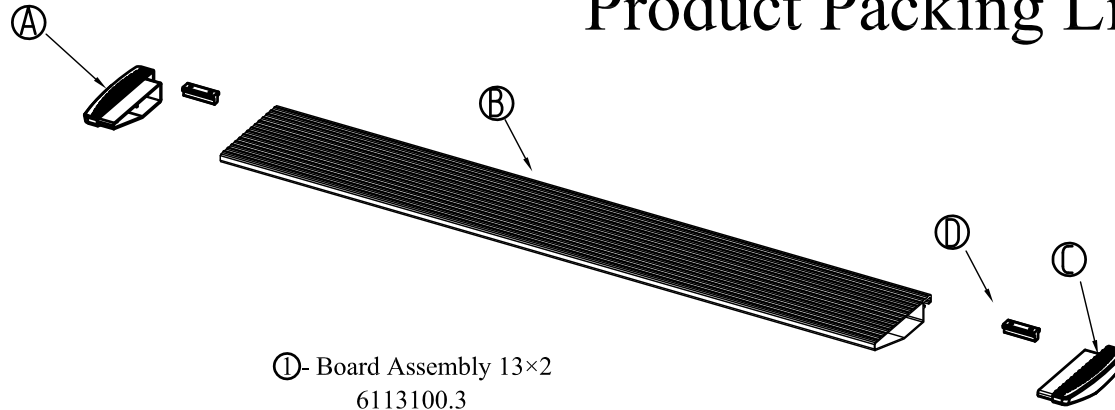
(Vertical height difference between the edge of power board and the vehicle door while board extending.)

(Both dimensions of forward and falling are theoretical, which may vary due to uncertainties such as installation error, manufacturing errors of vehicle bottom and etc.)

Note: Impact load is not allowed.

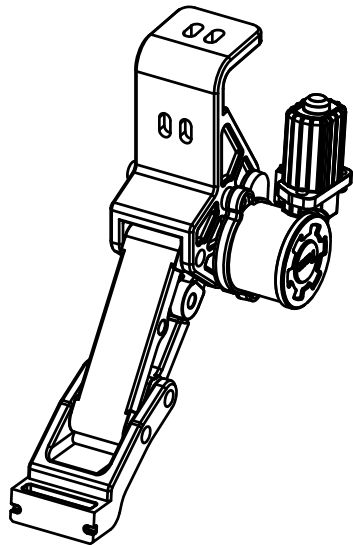
Please make sure the children and the aged will keep 20cm safe distance while power board is working to avoid any bumped or jammed.

Product Packing List

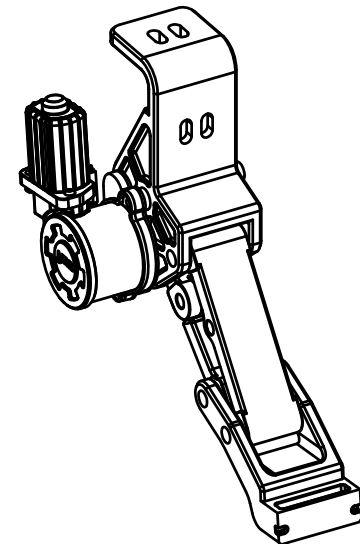


①- Board Assembly 13×2
6113100.3

(A)	6126100.3-4	End Cap Left B	(×1)
(B)	6113100.2-1	Board 13	(×1)
(C)	6126100.3-1	End Cap Right B	(×1)
(D)	6126100.3-3	T-Nut	(×2)



②- Front Motor Linkage Left 13×1
Rear Motor Linkage Right 13×1
6113100.1L



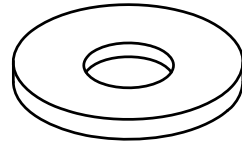
③- Rear Motor Linkage Left 13×1
Front Motor Linkage Right 13×1
6113100.1R

MITSU TRITON

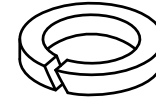
E-BOARD



④- Hexagon Flange Nut×4
GB/T6177.1-2000 M8



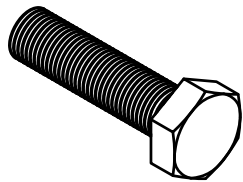
⑤- Big Washer Grade A×4
GB/T96.1-2002 8



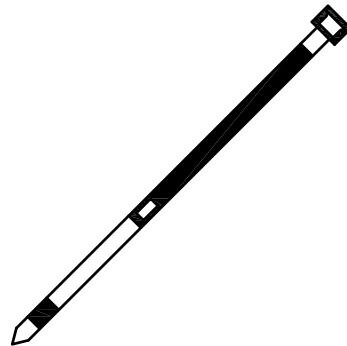
⑥- Spring Washer ×4
GB/T93-1987 8



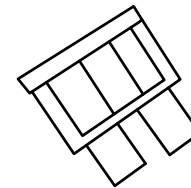
⑦- Socket Cap Bolt ×8
GB/T70.1-2000 M6×25



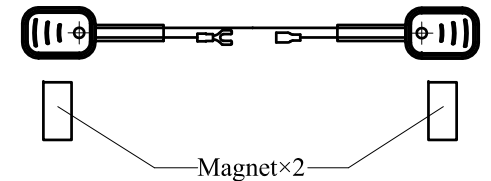
⑧- Hexagon Head Bolt×4
GB/T5783-2000 M8×25



⑨- Cable Tie ×25
GB/T22344-2008 5×300



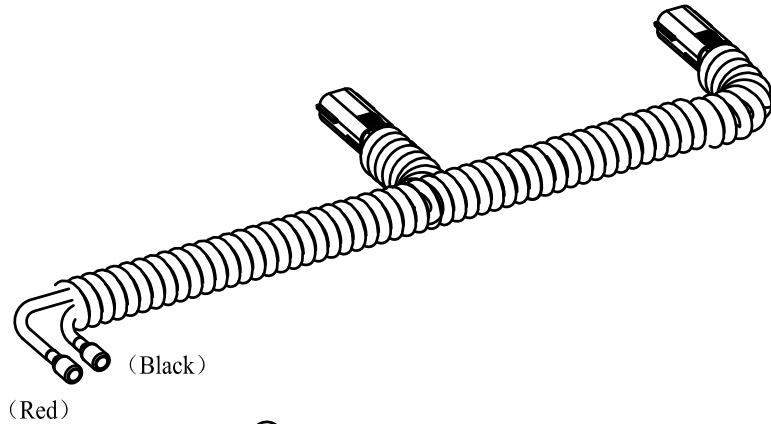
⑩- Fuse ×2



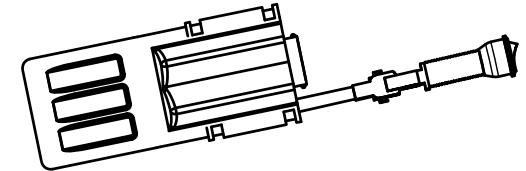
⑪- Magnetic Inductor ×2
Magnet×4

MITSU TRITON

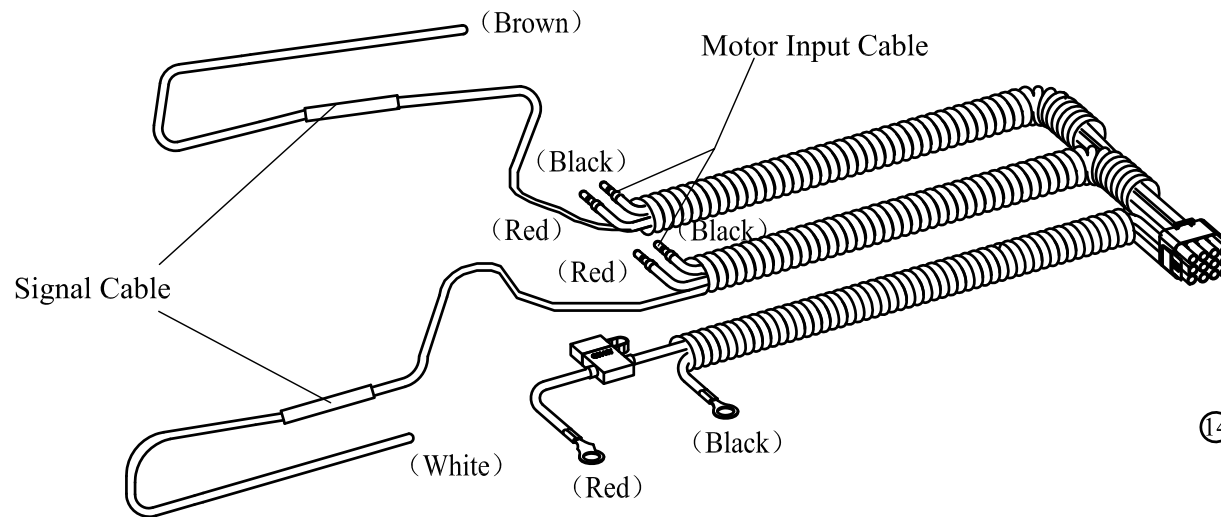
E-BOARD



⑫-Motor Connection Cable 13×2
6113100.4.3



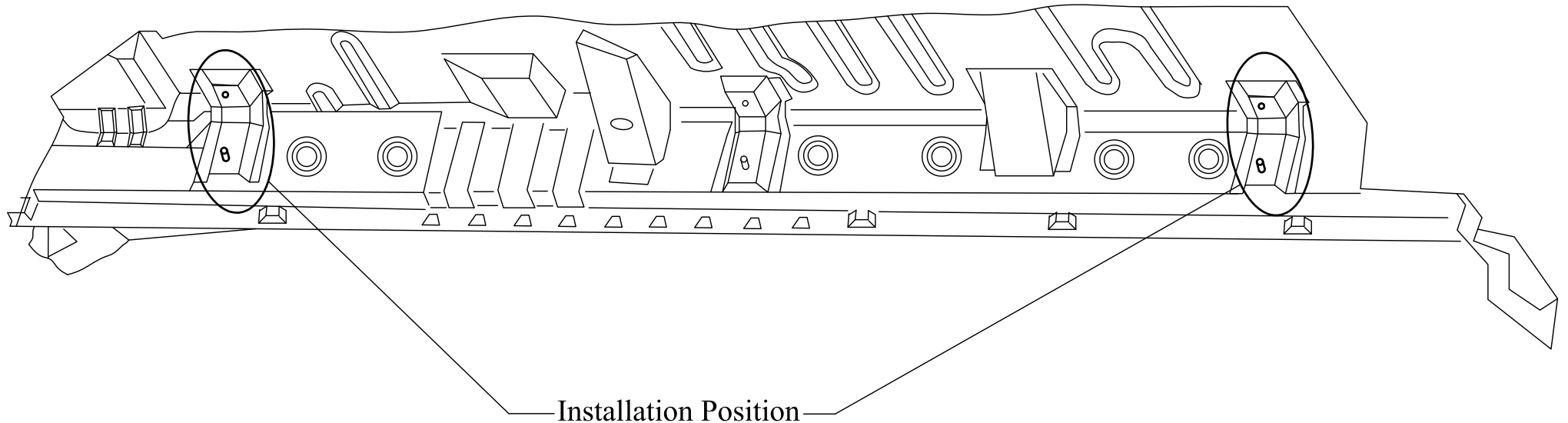
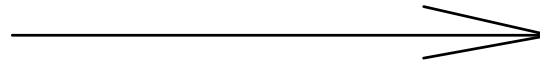
⑬-Controller Assembly 13×1
6113100.4.6



⑭-Control Input Cable 13×1
6113100.4.1

Mechanical Installation

Front



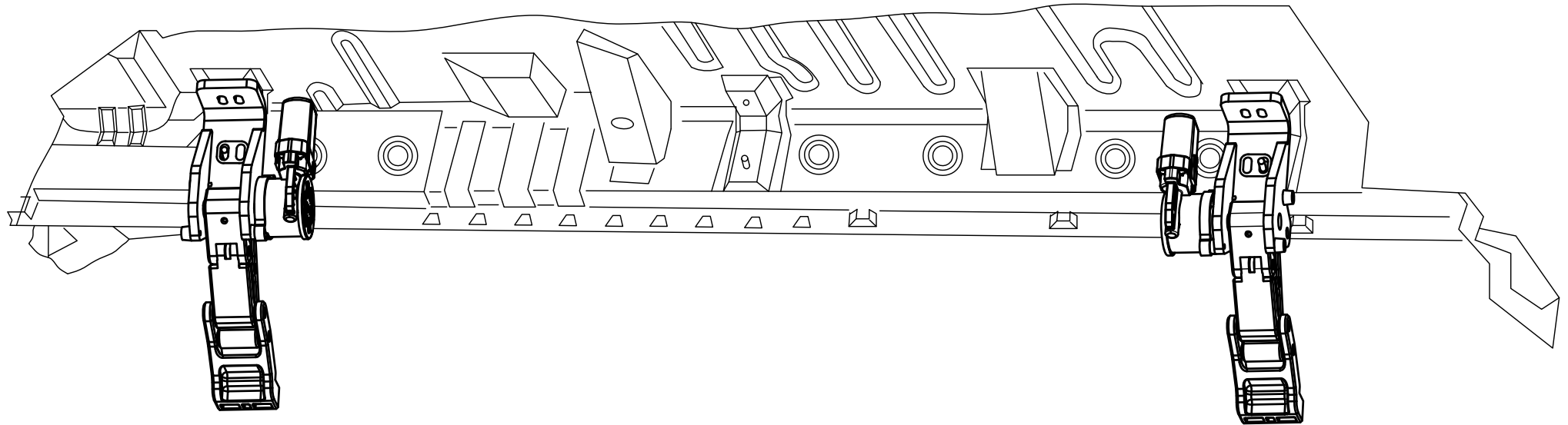
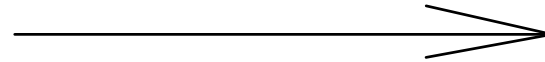
Installation
position on the left

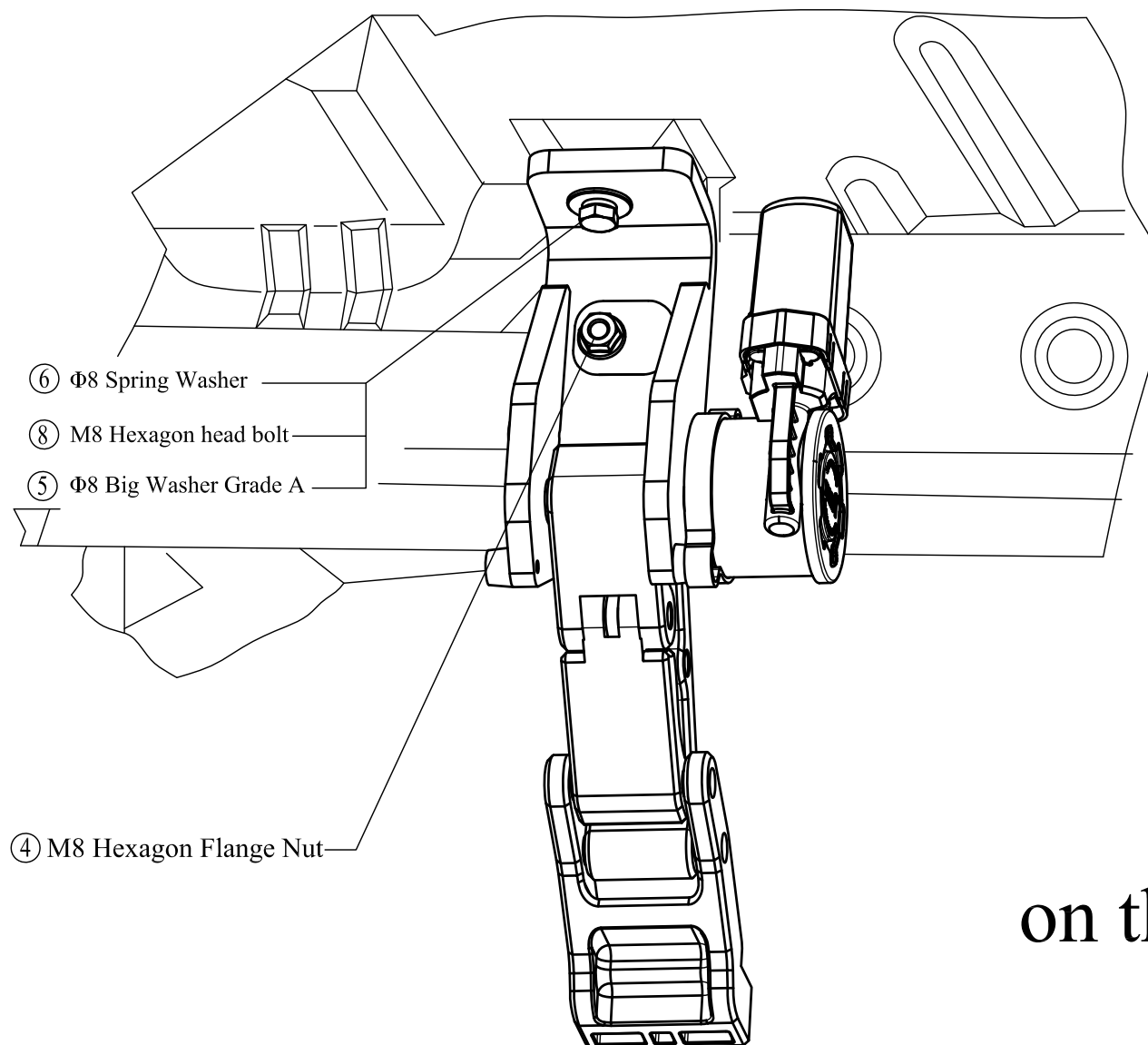
As shown in the picture: The installation screw of motor linkage should be matched with the original board fixing hole on the vehicle.

MITSU TRITON

E-BOARD

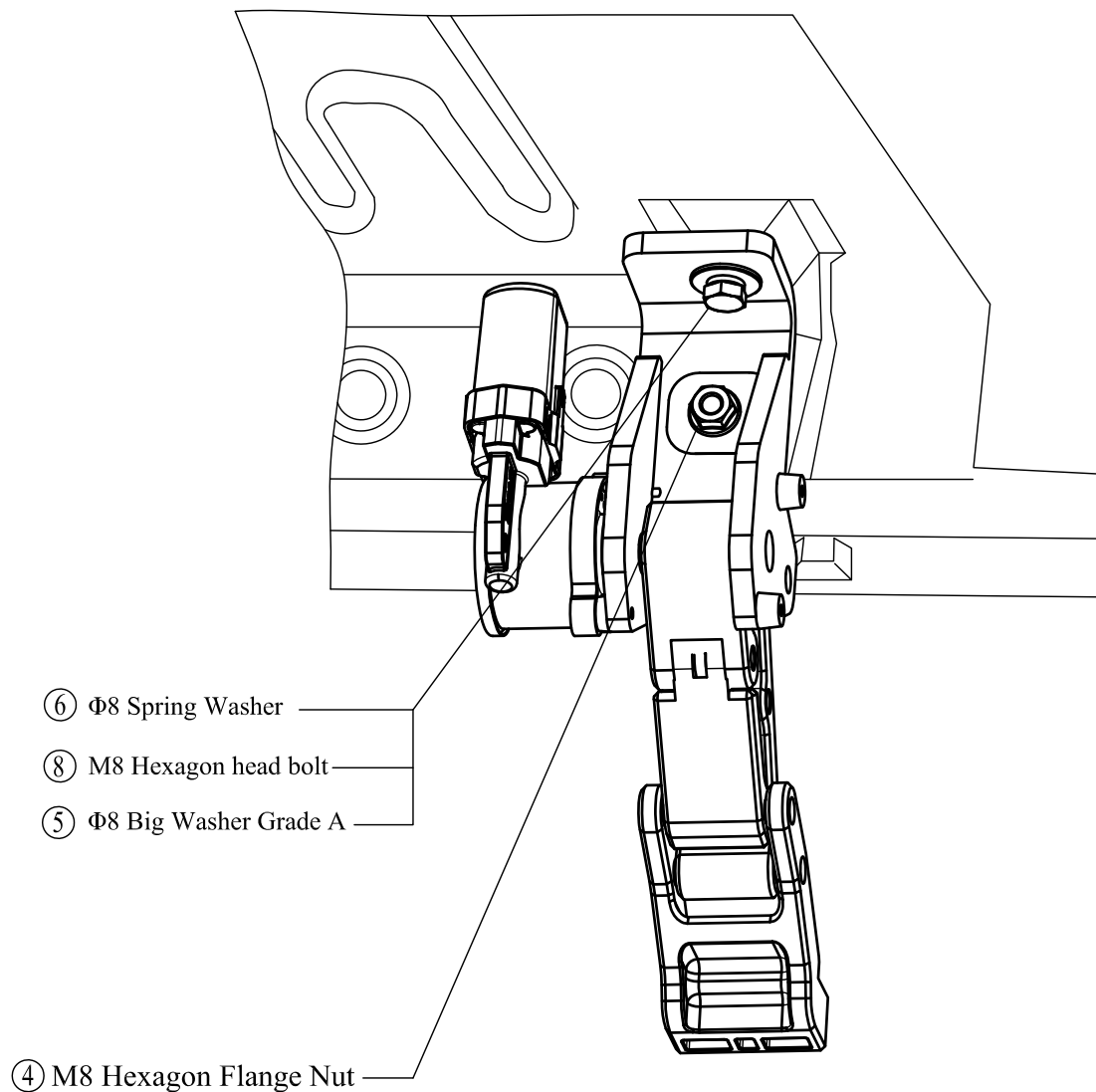
Front





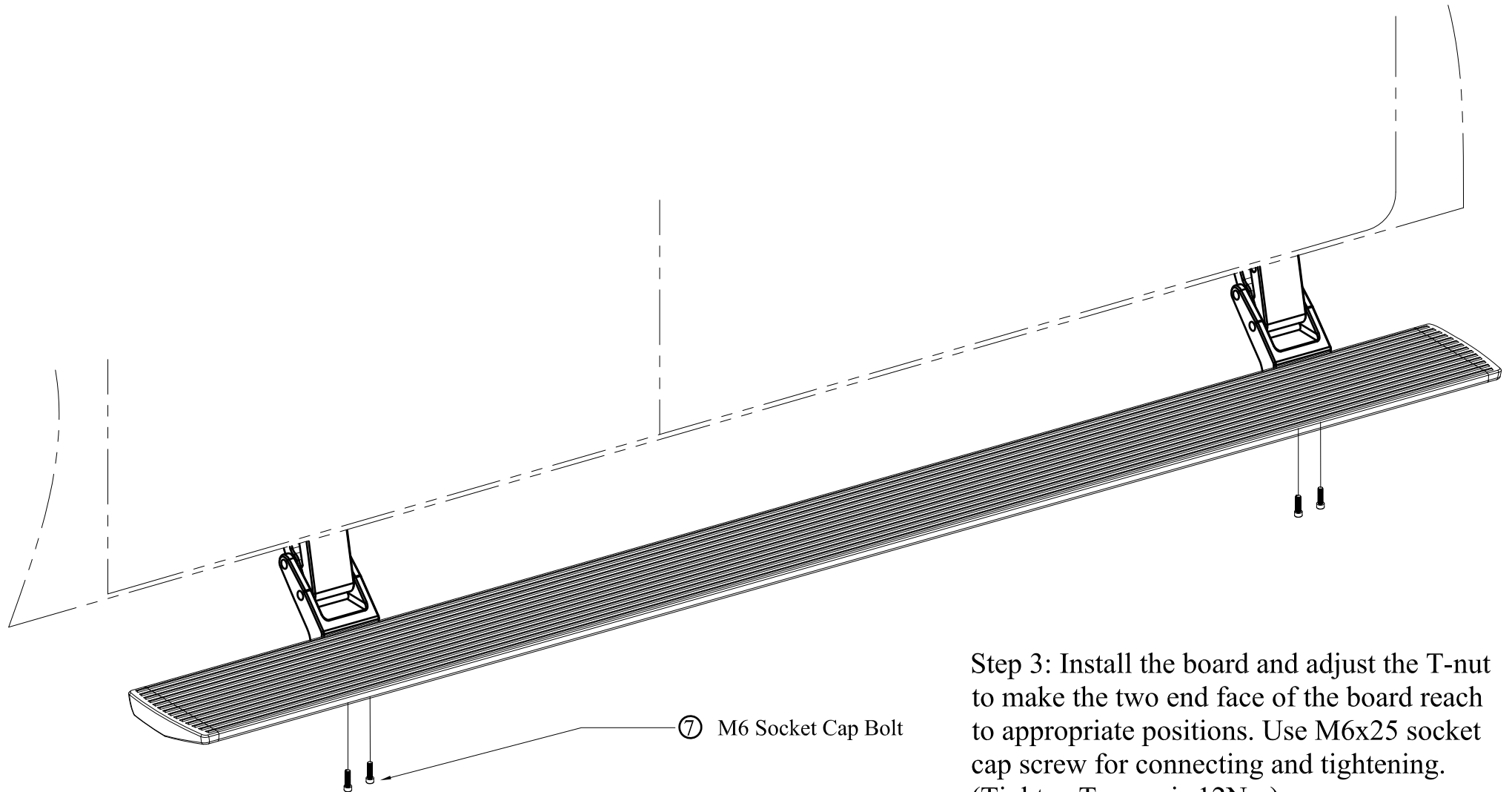
Step 1: As shown in the picture, fixing the hexagon flange nut into the corresponding screw and pre-tighten it. Then screw the hexagon head bolt (with spring washer and flat washer) into the corresponding installation hole and pre-tighten it. Tighten the above hexagon flange nut and hexagon head bolt. (Tighten Torque is 30Nm)

on the rear of left side



Step 2: As shown in the picture, fixing the hexagon flange nut into the corresponding screw and pre-tighten it. Then screw the hexagon head bolt (with spring washer and flat washer) into the corresponding installation hole and pre-tighten it. Tighten the above hexagon flange nut and hexagon head bolt. (Tighten Torque is 30Nm)

on the front of left side

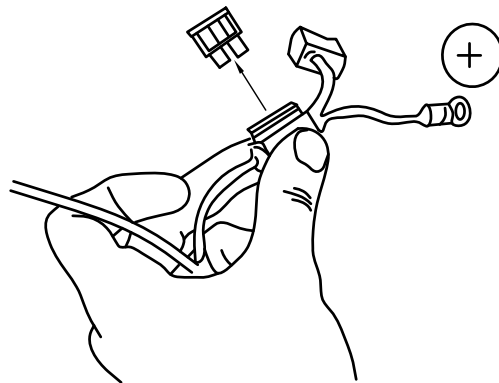
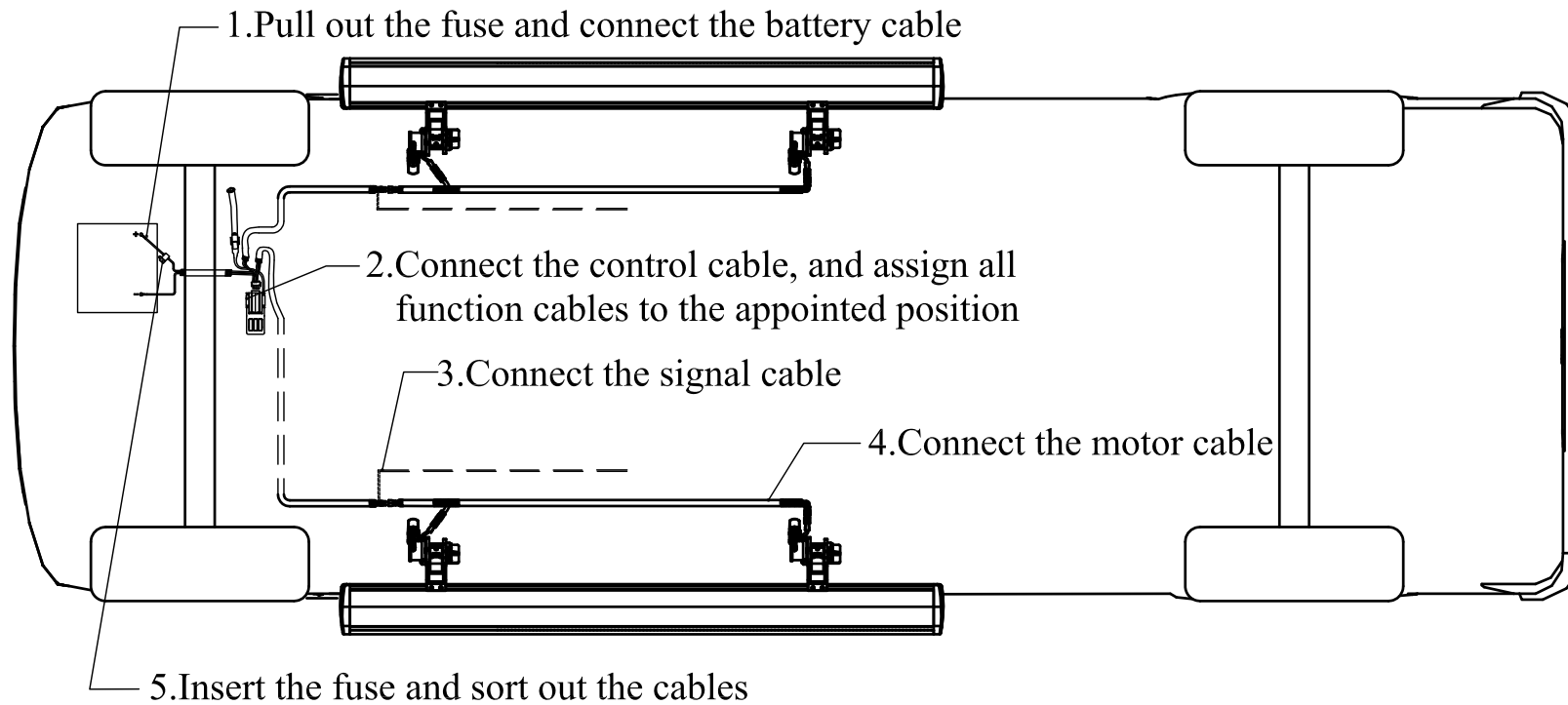


Step 3: Install the board and adjust the T-nut to make the two end face of the board reach to appropriate positions. Use M6x25 socket cap screw for connecting and tightening. (Tighten Torque is 12Nm)

MITSU TRITON

E-BOARD

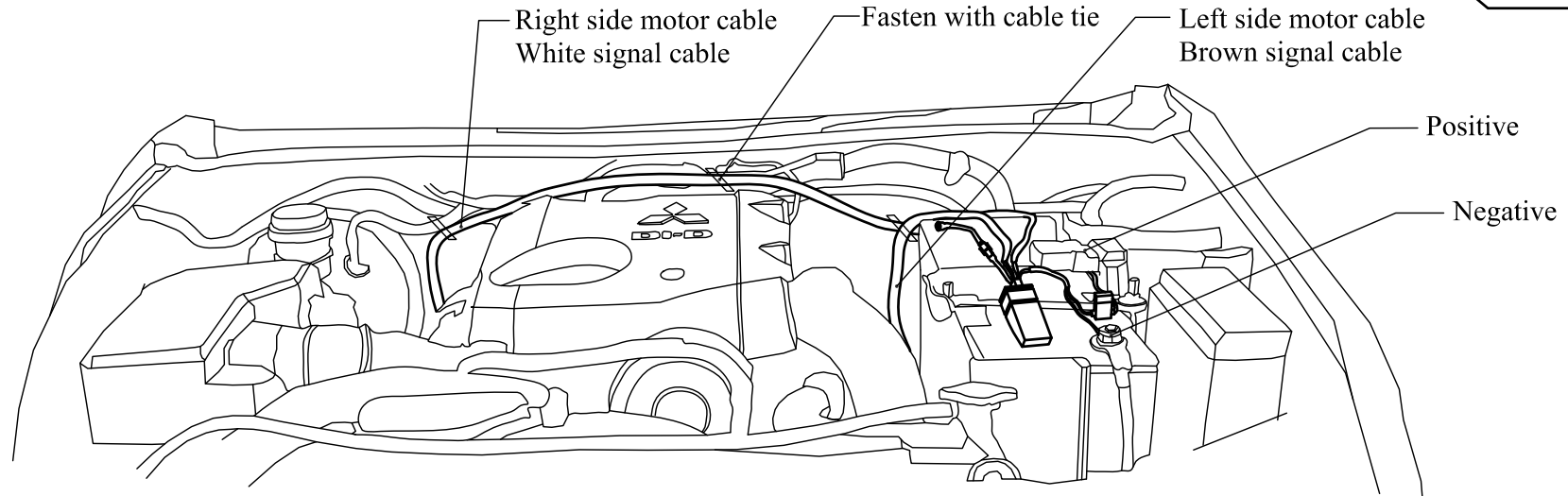
Electrical Installation
of Magnetic Control



Step 4: Find (14) control Input Cable, pull out the fuse (ensuring the safety during installation), and connect positive and negative to the vehicle battery.

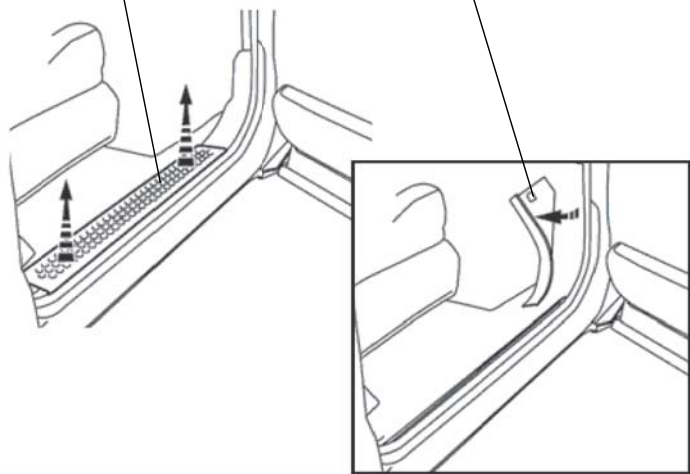
MITSU TRITON

E-BOARD

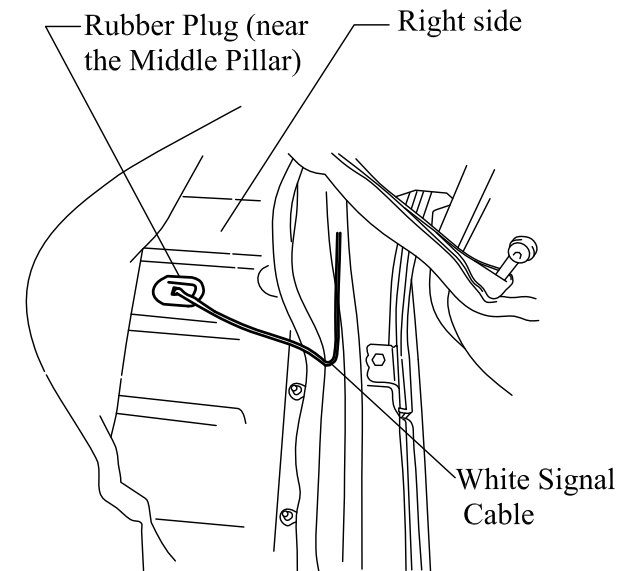


Step 5: Show as picture, fasten the ⑬ controller assembly by cable tie, and assign the cables according to the label. The cable harnesses pass through the vehicle floor to the vehicle bottom and inside, fasten the cables by cable tie.

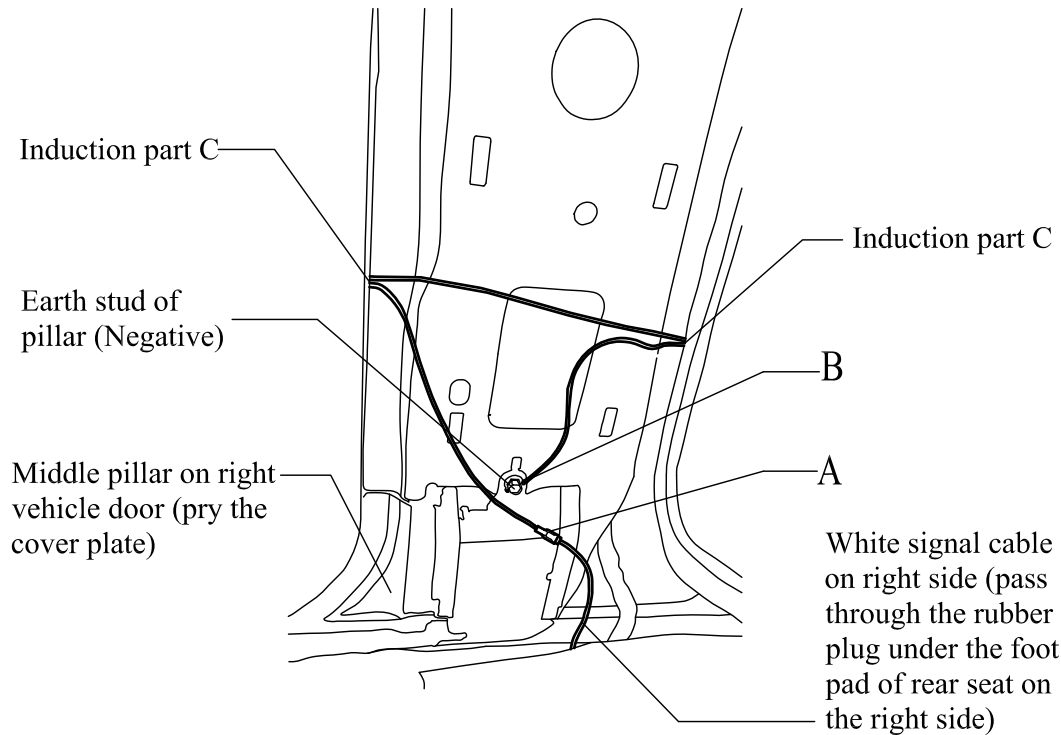
Right Side Cover Plate 1 Right Side Cover Plate 2



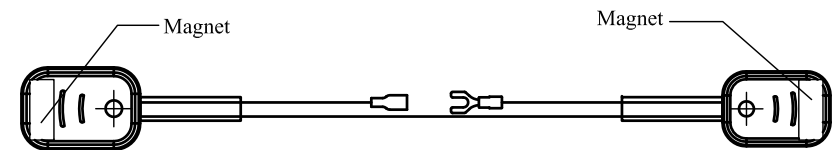
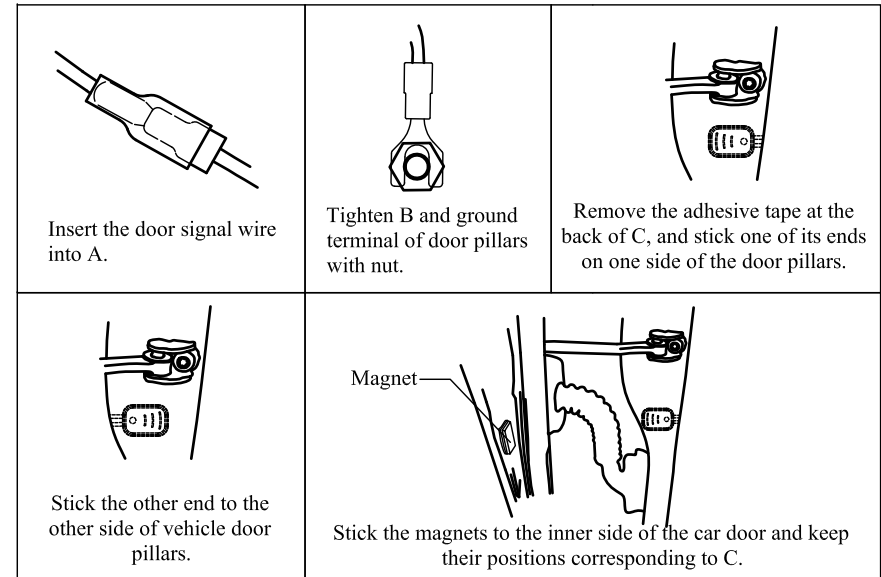
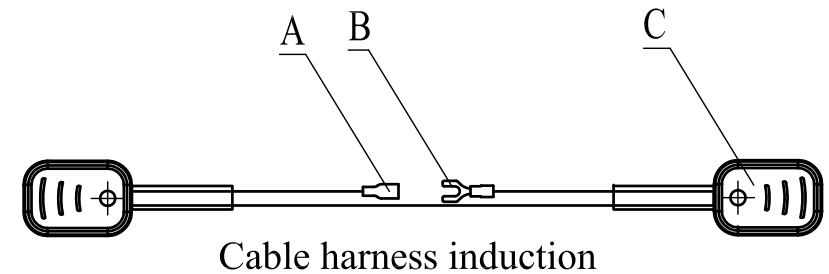
Step 6: Signal Cable Connection: Pry the cover of front, rear and middle pillar at right side, show as the left picture 1 & 2. Open the foot pad at right side, show as the right picture. The white signal cable pass through the right side rubber plug and get into the vehicle (please drill a hole on the rubber plug.), and then pass through the right side cover 1 to the middle pillar at the right side. And the brown signal cable should go to the middle pillar at the left side. The operation is same as right side.



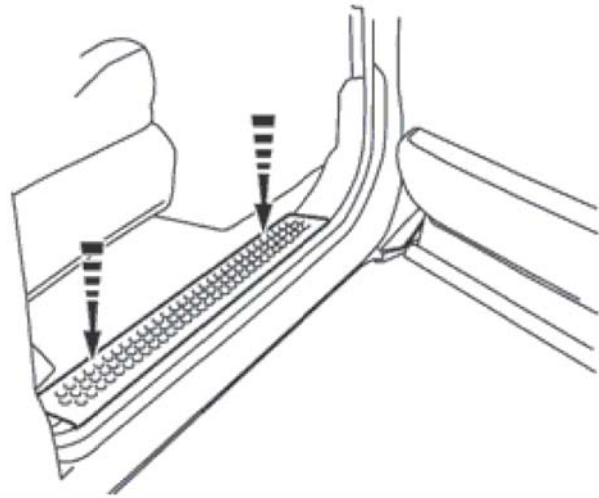
Introduction of Magnetic Inductor



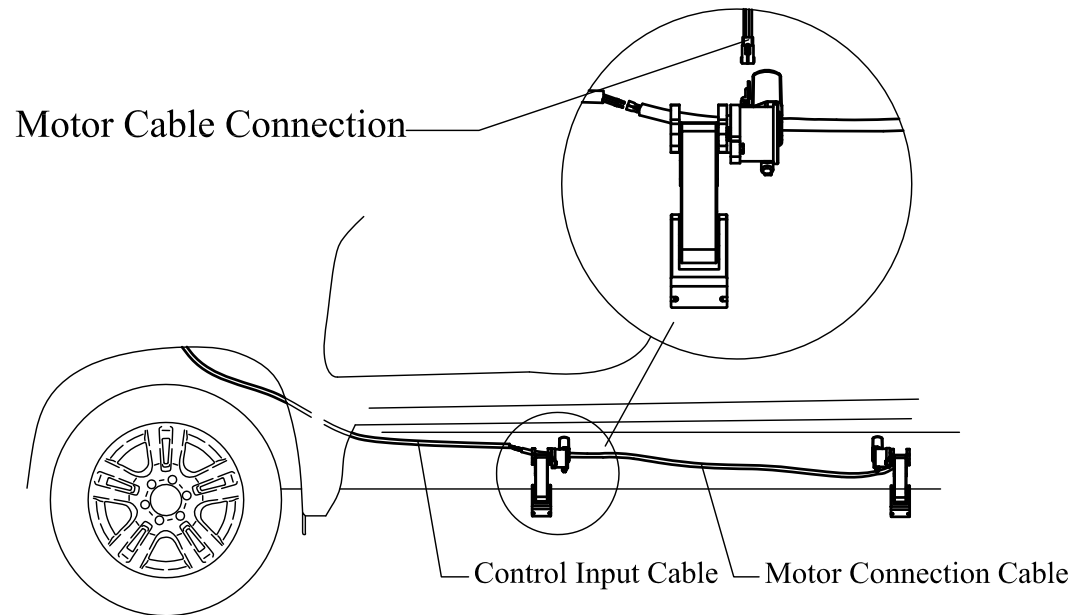
Step 7: Open the middle pillar cover plate of vehicle door on right side, expose the above part (shown as above), connect the white signal cable to terminal A, loosen the earth stud of middle pillar (ensure there is no oil paint interface of stud and pillar), connect terminal B to the earth stud, and then tighten the earth stud. Stick the induction part C to the both side of middle pillar (shown as above picture), stick the magnet inside of vehicle door to correspond with induction part. The brown signal cable connection of left side is same as the right side.



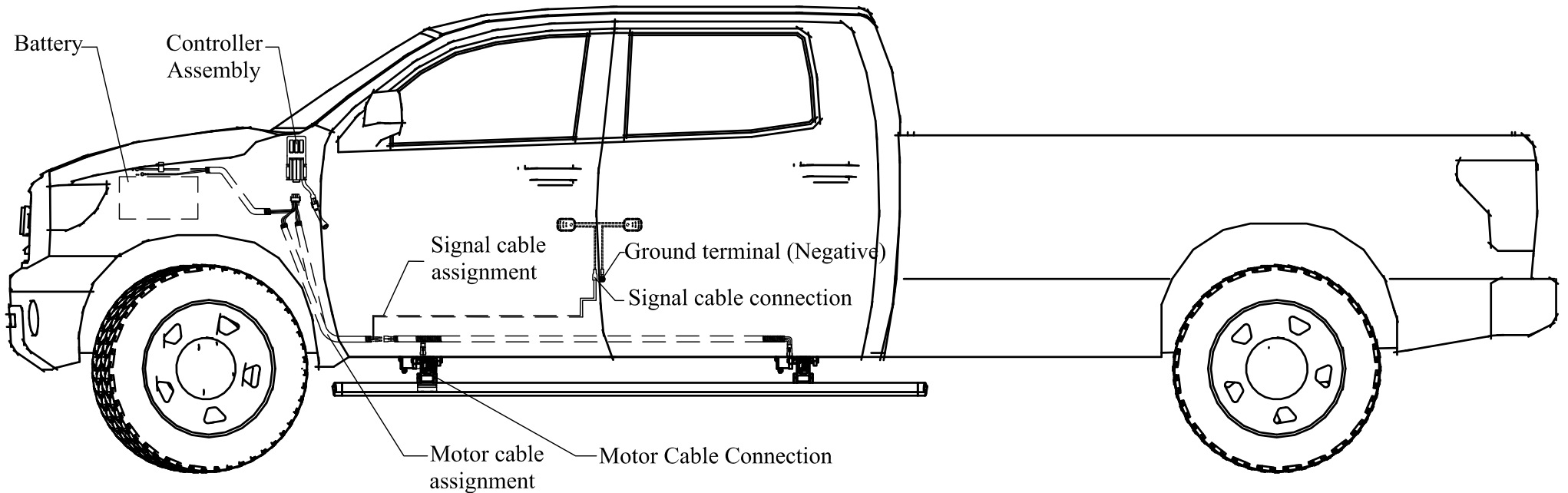
Instruction: when close the door, the magnet corresponding position is as shown above picture.



Step 8: Assign all the cables in order and close the cover plate.



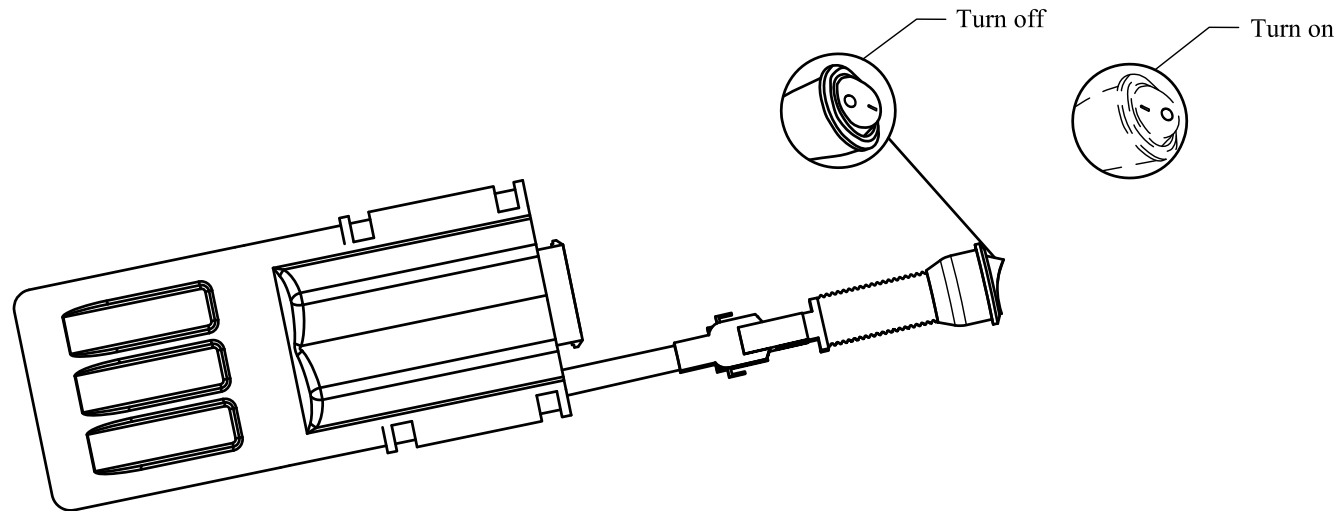
Step 9: Motor Cable Connection: Connect the ⑫ Motor Connection Cable and ⑭ Control Input Cable , and arrange the cable along with the vehicle beam. Note that the same color cable should be connected together. Fasten the cable on the vehicle beam by cable tie. Same cable installation is for the other side.



Step 10: Insert back the fuse, assign the cable in order. Check if all the cables are connected well and test if the power board can work normally. If it can work normally, the board installation is OK. (If it cannot work normally, please check the installation of each part.)

Summary of electric part

Instructions of Emergency Switch



I. Function of emergency switch

Press the red switch button in case of any emergency or product failure to protect vehicle will not damage under these condition. Both boards will go back automatically while the emergency switch button is turned on.

II. The using condition of emergency switch:

1. Product failure;
2. User needs steps not work while the road / off-road situation is tough.
3. Please do not use power board if motor linkage or control cable is damaged.

III. Emergency switch using method:

1. Press emergency switch button, and the emergency switch is "on". And at the same time, the steps will automatically go back and stop working. In case of product failure, please contact with after-sales service.
2. Press the emergency switch button again, and the emergency switch is "off". And at the same time, the power board will return to its normal working status.
3. The original status of emergency switch is "off".

Maintenance		
3 months Periodical Inspection		Inspect the normal operation of the mechanism
		Inspect damage for each joint of the control cable and the bare part outside of the girder
		Inspect screws' looseness of motor and power board
Special Case Inspection		Clean sediment on time for power board and its components
		Clean ice on time for power board and its components
Maintenance card		
The board couldn't activate when doors open and close	Electrical Malfunction	Fault of wiring the battery
		Fault of wiring door signal
		Fault of controller
		Fault of motor wiring
		Fault of motor
		Inspect the wiring according to the wiring layout when the door control signal failure occurs
	Mechanics Malfunction	An object is block the board
		Boards are not mounting symmetrical

Note: In the use process, you may meet some other unknown trouble. Please contact us timely to feedback the problems, we will solve it for you as soon as possible. Thank you!

T-MAX Product Warranty Instructions

Thank you very much for using our product!

I Maintenance Instruction

- 1、 During warranty period, T-MAX provides free maintenance for any malfunction related to the manufacturer. Warranty period lasts 24 months or 5 kilo in 2 years after sale. For individual related faults, T-MAX provides paid maintenance.
- 2、 T-MAX promises to provide lifetime maintenance for Way Past Warranty and only charges for necessary material and labor. The charging standard refers to the ATM fee scale of local T-MAX terminal service provider.
- 3、 For all replaced parts, T-MAX ensures to provide maintenance within 12 months after the replacement.
- 4、 The ownership of the old parts from the replacement belongs to T-MAX (Hangzhou) Technology Co., Ltd.
- 5、 Within the limit of law, the interpretation of warranty policy belongs to T-MAX (Hangzhou) Technology Co., Ltd.

II Situations below will not offer free warranty:

- 1、 No warranty certificate;
- 2、 Fault caused by customer's misusing or Incorrect installation
- 3、 Fault caused by none professional maintenance staff's disassembly
- 4、 Fault caused by force majeure.
- 5、 Fault, scratch and torn due to movement or falling
- 6、 Fault caused by improper maintenance or misusing

III、 Precautions:

- 1、 In the case of extreme off-road, electric pedal is not recommended to avoid the damage of the pedal;
- 2、 After extreme off-road, start maintenance for electric pedal to protect the performance and the longevity of the pedal;
- 3、 Electrical parts: Check the control lines in T-MAX Terminal Services branch regularly;
- 4、 Mechanical parts: Pedal and pedal components should be cleaned up promptly when sediment appears;
- 5、 Power board should be using frequently. The idle time should not exceed three months;
- 6、 Power board need maintenance regularly in T-MAX terminal service branch;

E-BOARD[®]

Produced by

T-MAX(HANGZHOU)TECHNOLOGY CO.,LTD

www.tmax.biz